

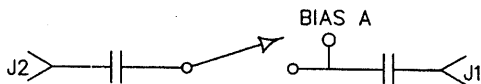
DESCRIPTION

AMC MODEL SWN-2184-1A OPTION: 506, 004 IS A REFLECTIVE, SINGLE POLE SINGLE THROW SWITCH DESIGNED TO OPERATE AT A FIXED FREQUENCY OF 5.6 GHz HAVING AN INSERTION LOSS OF 1.0 dB TYPICAL, 1.5 dB MAXIMUM, AN ISOLATION OF 85 dB MINIMUM AND A VSWR OF 1.6:1.

SPECIFICATIONS

- FREQUENCY:..... 5.6 GHz
- INSERTION LOSS:..... 1.0 dB TYPICAL, 1.5 dB MAXIMUM
- ISOLATION:..... 85 dB MINIMUM
- VSWR:..... 1.6:1
- SWITCHING SPEED:..... RISE TIME: 10 nSec MAXIMUM
FALL TIME: 10 nSec MAXIMUM
DELAY ON: 60 nSec MAXIMUM
DELAY OFF: 60 nSec MAXIMUM
- CONTROL:..... TTL LOGIC "0" = ON
TTL LOGIC "1" = OFF
- POWER SUPPLY:..... +15V @ 100 mA MAXIMUM
-15V @ 45 mA MAXIMUM
- SIZE:..... 1.00" x 1.00" x 0.50"

BLOCK DIAGRAM



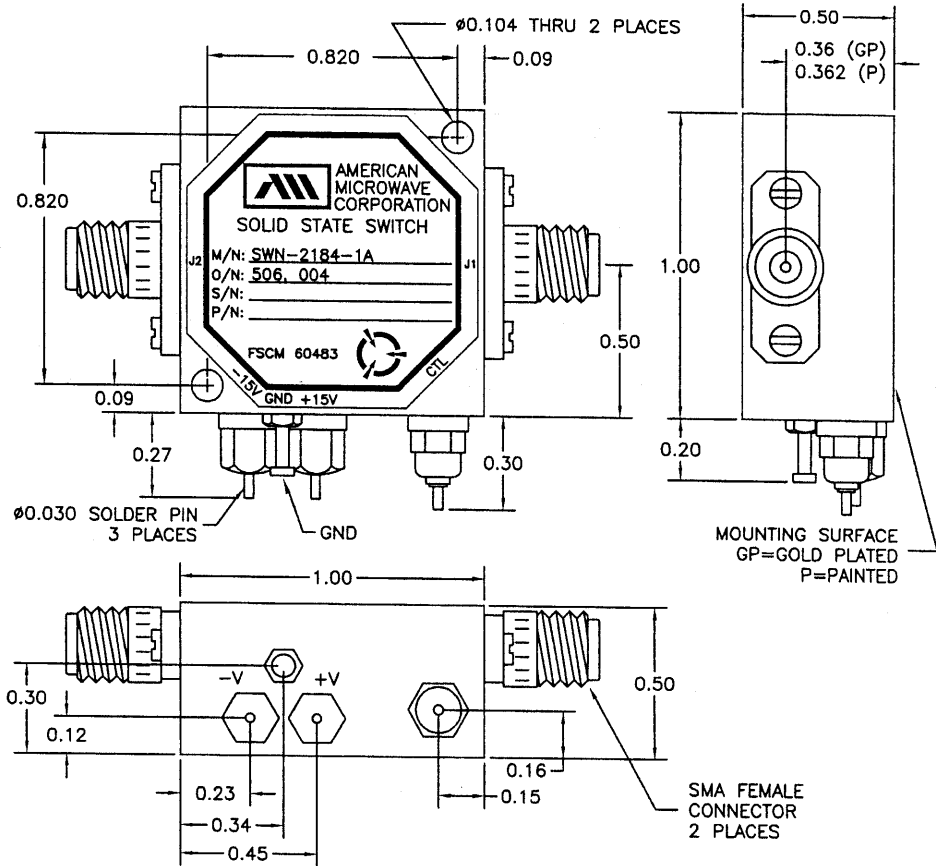
ENVIRONMENTAL RATINGS

- TEMPERATURE:..... -65°C TO +110°C (OPERATING)
-65°C TO +125°C (STORAGE)
- HUMIDITY:..... MIL-STD-202F, METHOD 103B COND. B
- SHOCK:..... MIL-STD-202F, METHOD 213B COND. B
- VIBRATION:..... MIL-STD-202F, METHOD 204D COND. B
- ALTITUDE:..... MIL-STD-202F, METHOD 105C COND. B
- TEMPERATURE CYCLE:..... MIL-STD-202F, METHOD 107D COND. A

NOTE: SPECIFICATIONS WILL VARY OVER OPERATING TEMPERATURE
NOTE: THE ABOVE SPECIFICATIONS ARE SUBJECT TO CHANGE OR REVISION

ALL DIMENSIONS ARE IN INCHES
TOLERANCES:
X.XX ±0.020
X.XXX ±0.010

ZONE REV.		DESCRIPTION	DATE	APPROVED
	-	ORIGINAL RELEASE JOB# 408182	9/7/04	RA



AMERICAN MICROWAVE CORPORATION

7311-G GROVE ROAD
FREDERICK, MARYLAND 21704 USA
TEL: 301-662-4700 FAX: 301-662-4938
WEBSITE: www.americanmicrowavecorp.com
E-MAIL: sales@americanmicrowavecorp.com
ISO 9001:2000 CERTIFIED

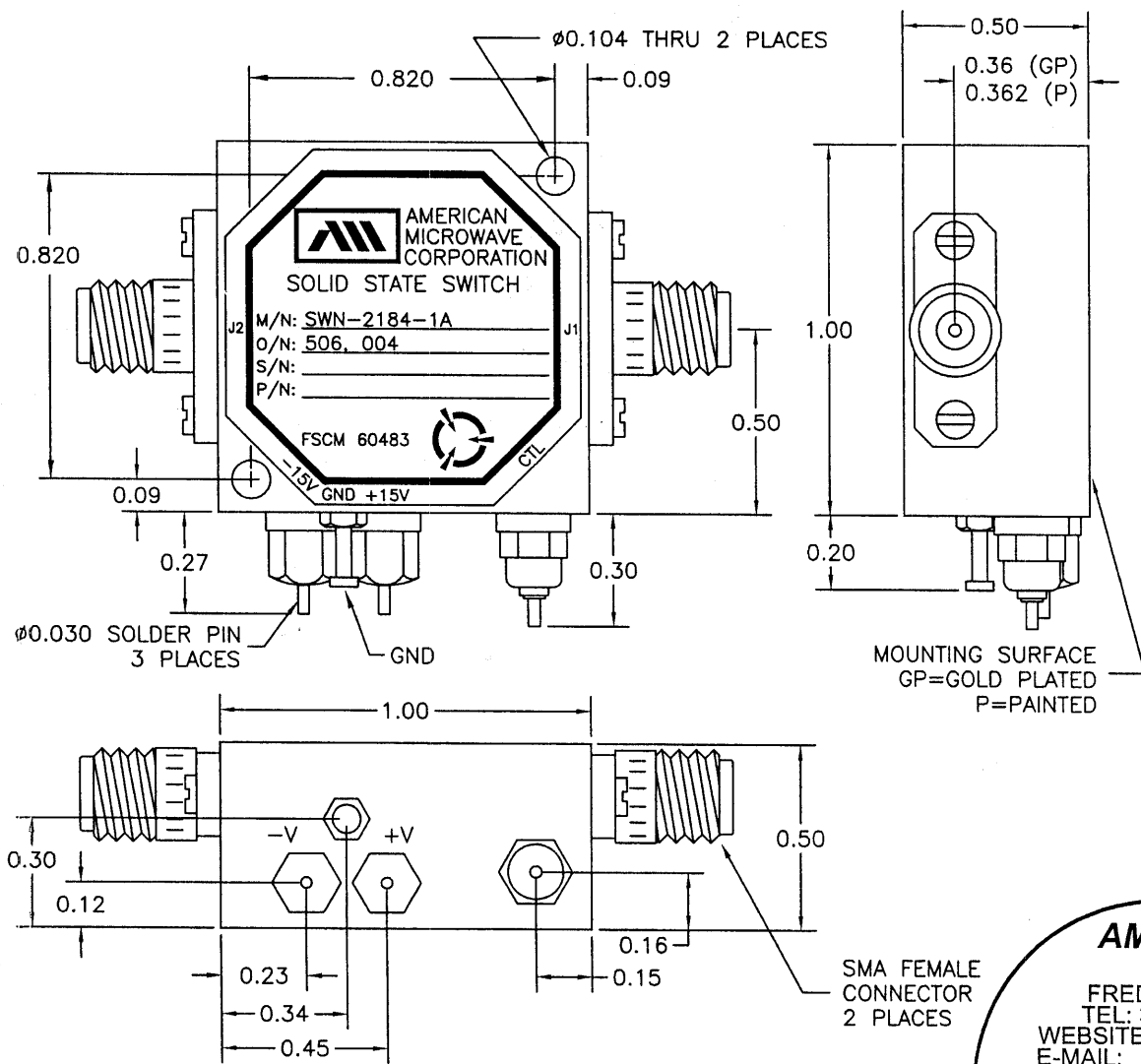


APPROVALS		DATE	TITLE		
DRAWN	gdy	9/7/04	PRODUCT FEATURE SWN-2184-1A OPTION: 506, 004		
CHECKED	RA	9/10/04	5.6 GHz, REFLECTIVE, SINGLE POLE SINGLE THROW SWITCH		
ISSUED			SIZE	FSCM NO.	DWG NO.
			A	60483	100-7113
			SCALE	N:S	SHEET
					1 OF 3

DESCRIPTION

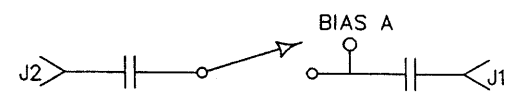
AMC MODEL SWN-2184-1A OPTION: 506, 004 IS A REFLECTIVE, SINGLE POLE SINGLE THROW SWITCH DESIGNED TO OPERATE AT A FIXED FREQUENCY OF 5.6 GHz HAVING AN INSERTION LOSS OF 1.0 dB TYPICAL, 1.5 dB MAXIMUM, AN ISOLATION OF 85 dB MINIMUM AND A VSWR OF 1.6:1.

REVISIONS				
ZONE	REV.	DESCRIPTION	DATE	APPROVED
	-	ORIGINAL RELEASE JOB# 408182	9/7/04	RA



MECHANICAL OUTLINE

BLOCK DIAGRAM



ALL DIMENSIONS ARE IN INCHES
 TOLERANCES:
 X.XX ±0.020
 X.XXX ±0.010

AMERICAN MICROWAVE CORPORATION

7311-G GROVE ROAD
 FREDERICK, MARYLAND 21704 USA
 TEL: 301-662-4700 FAX: 301-662-4938
 WEBSITE: www.americanmicrowavecorp.com
 E-MAIL: sales@americanmicrowavecorp.com
 ISO 9001:2000 CERTIFIED



APPROVALS		DATE	TITLE		
DRAWN	<i>gdf</i>	9/7/04	MECHANICAL OUTLINE SWN-2184-1A OPTION: 506, 004		
CHECKED	<i>RA</i>	7/10/04	5.6 GHz, REFLECTIVE, SINGLE POLE SINGLE THROW SWITCH	SIZE	FSCM NO.
ISSUED			A	60483	DWG NO.
					100-7113
			SCALE N:S		SHEET 2 OF 3